



DOMINATOR®

High Efficiency Rigid Cell, Extended Surface Filters
4" (MERV 11 & 14) and 12" Depths (MERV 11 & 15)

DOMINATOR® 4" and 12" High Efficiency Rigid Cell Extended Surface Filter.

The PUROLATOR DOMINATOR high efficiency filter may qualify as a sustainable component for LEED/Green Building Initiative. The DOMINATOR is a MERV 15 (Standard 52.2 Minimum Efficiency Reporting Value) product with extremely low initial resistance characteristics. MERV 15 is hospital compliant for full patient care. The DOMINATOR will help you increase your overall filter efficiency, to exceed LEED requirements of MERV 13, while maintaining, or lowering, your energy costs.

For more information regarding the DOMINATOR from PUROLATOR, please contact your nearest PUROLATOR Stocking Distributor, local PUROLATOR Territory Manager or a Customer Care Associate at 1-866-925-2247. You can also click the Distributor Locator Button at www.purolatorair.com



Patent #6,685,833

4" offered in MERV 11 & 14 and 12" offered in MERV 11 & 15



12" with Single Header



4" with Single Header

Unique Channel Flow Molded Media:

- 4" is MERV 11 & 14 and 12" is MERV 11 & 15
- Class 1 per U.L. Standard 900
- Very Low Resistance Reduces Energy Consumption; Lowers Energy Costs
- High Dust Holding Capacity
- Light Weight all Plastic Construction
- May qualify as a sustainable component for a LEED/Green Building Initiative

DOMINATOR

*High Efficiency Extended Surface Filters with
Channel Flow Molded Media*

4" Deep Filters - MERV 11 & 14

For use where space is limited. 4" deep DOMINATOR filters operate at 500 FPM at substantially lower resistance than competitive 4" - 6" deep filters.

12" Deep Filters - MERV 11 & 15 Single Header Construction

DOMINATOR filters replace traditional 12" deep rigid cell filters operating at 500 - 625 FPM with substantially lower resistance.

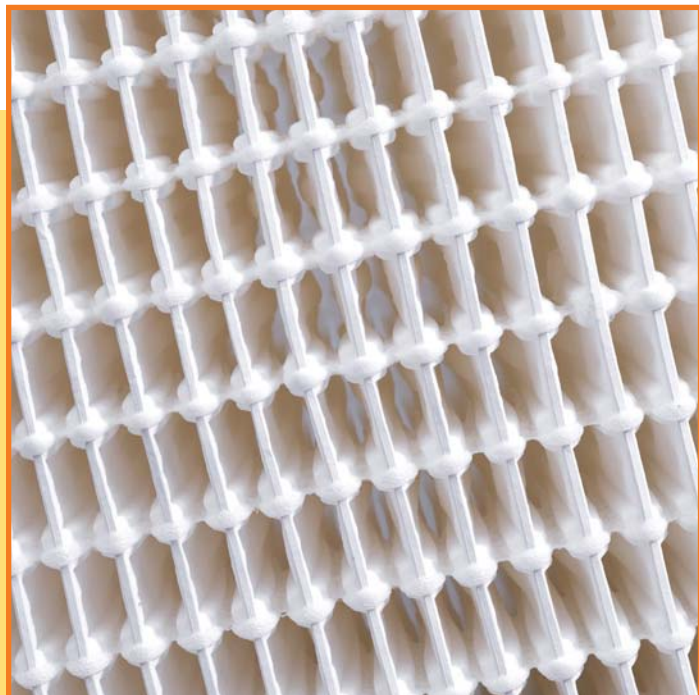



Purolator[®]

Unique Channel-Flow Molded Media Produces Lowest Resistance

DOMINATOR media is molded into a series of preformed channels that direct the air smoothly through the filter. This unique process results in the lowest resistance of any high efficiency filter on the market. Low resistance maximizes energy savings.

DOMINATOR Close up view shows how beads of adhesive applied to the media hold the channels open to permit free flow of air for low resistance and complete use of the media.



High Efficiency, Low Resistance,
Rigid Cell Construction Designed for
Difficult Operating Conditions

Reverse Flow Installation For Front Load Applications (12" Deep Filters)

For front load installations, or where there is no down stream access, 12" deep DOMINATOR filters are available in a reverse flow model.

Glue Bead Adhesive Strips Stabilize Pleat Pack

Beads of adhesive applied to the media bond the pleats into a totally rigid, solid pack. The pleats hold their shape and the molded channels are held open for free flow of air in all types of operating conditions. No pleat deformation, no blocking off.

Rigid Cell Design Handles Difficult Operating Conditions

Rigid cell design, all plastic components and 100% synthetic media make DOMINATOR filters ideal for the most demanding operating conditions, including variable air volume systems, high air flow, turbulence, repeated fan shut down, high moisture, and some chemical or corrosive conditions. These filters are designed for tough installations.

Full Media Exposure Produces High Dust Holding Capacity

The Channel-Flow molded media design not only produces low resistance, it also allows the media to be completely exposed to dirt laden air. Dirt loads evenly over every square foot of filter surface area for maximum dust holding capacity and long service life.

All Plastic Construction – Completely Incinerable, Light Weight

The cell sides are made of high strength, high impact polystyrene plastic. They are moisture, chemical and corrosion resistant. DOMINATOR filters contain no metal components – no rust, no corrosion. The elimination of metal also makes these filters completely incinerable and light weight.



Spring latches are used to secure the 12" Reverse Flow DOMINATOR filter to the holding frame.



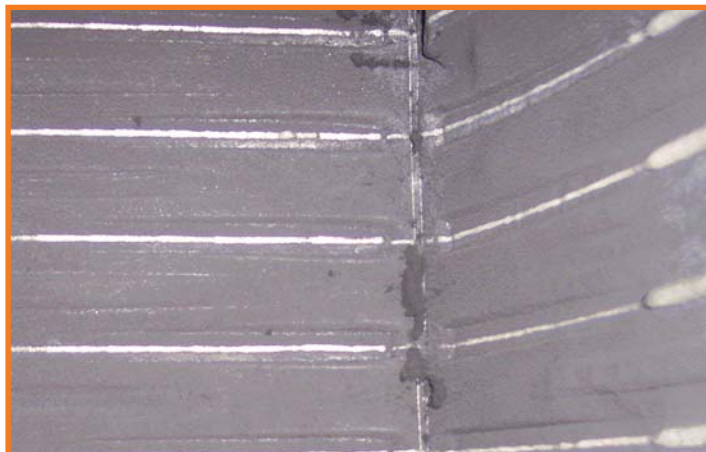
2" & 4" pre-filter clips hold the pre-filter to the Reverse Flow DOMINATOR filter.



Various sized metal frames are available to make the DOMINATOR suitable for most any application.

100% Synthetic Media

DOMINATOR filters are made with 100% synthetic media. It is extremely durable, resists tearing, abrasion and is highly damage resistant. No more media damage during shipping, handling or installation. DOMINATOR media is also unaffected by exposure to moisture and some chemicals. This media is just plain tough.



See how the preformed channels allow dirt to be collected all the way to the back of the pleats. Every square foot of media is fully utilized for maximum dust capacity.

DOMINATOR®

High Efficiency Extended Surface Filters
with Channel Flow Molded Media



Model Number	Nominal Size (HxWxD) Inches	Actual Size (HxWxD) Inches	Rated Air Flow Capacity (CFM)	Initial Resistance (In. W. G.) @Rated AirFlow MERV 14,15	Initial Resistance (In. W. G.) @Rated Air Flow MERV 11	Recommended Final Resistance (In. W. G.)
12" Packs - Single Header						
DR65-4412	24x24x12	23 $\frac{3}{8}$ x 23 $\frac{3}{8}$ x 11 $\frac{1}{2}$	2000	-	.26"	1.5"
DR65-0412	20x24x12	19 $\frac{3}{8}$ x 23 $\frac{3}{8}$ x 11 $\frac{1}{2}$	1650	-	.26"	1.5"
DR65-0012	20x20x12	19 $\frac{3}{8}$ x 19 $\frac{3}{8}$ x 11 $\frac{1}{2}$	1400	-	.26"	1.5"
DR65-2412	12x24x12	11 $\frac{3}{8}$ x 23 $\frac{3}{8}$ x 11 $\frac{1}{2}$	1000	-	.26"	1.5"
DR95-4412	24x24x12	23 $\frac{3}{8}$ x 23 $\frac{3}{8}$ x 11 $\frac{1}{2}$	2000	.34"	-	1.5"
DR95-0412	20x24x12	19 $\frac{3}{8}$ x 23 $\frac{3}{8}$ x 11 $\frac{1}{2}$	1650	.34"	-	1.5"
DR95-0012	20x20x12	19 $\frac{3}{8}$ x 19 $\frac{3}{8}$ x 11 $\frac{1}{2}$	1400	.34"	-	1.5"
DR95-2412	12x24x12	11 $\frac{3}{8}$ x 23 $\frac{3}{8}$ x 11 $\frac{1}{2}$	1000	.34"	-	1.5"

4" Packs						
DR65-4404	24x24x4	23 $\frac{3}{8}$ x 23 $\frac{3}{8}$ x 3 $\frac{3}{4}$	2000	-	.23"	1.5"
DR65-0504	20x25x4*	19 $\frac{3}{8}$ x 24 $\frac{3}{8}$ x 3 $\frac{3}{4}$	1750	-	.23"	1.5"
DR65-0404	20x24x4	19 $\frac{3}{8}$ x 23 $\frac{3}{8}$ x 3 $\frac{3}{4}$	1650	-	.23"	1.5"
DR65-0004	20x20x4	19 $\frac{3}{8}$ x 19 $\frac{3}{8}$ x 3 $\frac{3}{4}$	1400	-	.23"	1.5"
DR65-6504	16x25x4*	15 $\frac{3}{8}$ x 24 $\frac{3}{8}$ x 3 $\frac{3}{4}$	1400	-	.23"	1.5"
DR65-6004	16x20x4	15 $\frac{3}{8}$ x 19 $\frac{3}{8}$ x 3 $\frac{3}{4}$	1100	-	.23"	1.5"
DR65-2404	12x24x4	11 $\frac{3}{8}$ x 23 $\frac{3}{8}$ x 3 $\frac{3}{4}$	1100	-	.23"	1.5"
DR95-4404	24x24x4	23 $\frac{3}{8}$ x 23 $\frac{3}{8}$ x 3 $\frac{3}{4}$	2000	.43"	-	1.5"
DR95-0504	20x25x4*	19 $\frac{3}{8}$ x 24 $\frac{3}{8}$ x 3 $\frac{3}{4}$	1750	.43"	-	1.5"
DR95-0404	20x24x4	19 $\frac{3}{8}$ x 23 $\frac{3}{8}$ x 3 $\frac{3}{4}$	1650	.43"	-	1.5"
DR95-0004	20x20x4	19 $\frac{3}{8}$ x 19 $\frac{3}{8}$ x 3 $\frac{3}{4}$	1400	.43"	-	1.5"
DR95-6504	16x25x4*	15 $\frac{3}{8}$ x 24 $\frac{3}{8}$ x 3 $\frac{3}{4}$	1400	.43"	-	1.5"
DR95-6004	16x20x4	15 $\frac{3}{8}$ x 19 $\frac{3}{8}$ x 3 $\frac{3}{4}$	1100	.43"	-	1.5"
DR95-2404	12x24x4	11 $\frac{3}{8}$ x 23 $\frac{3}{8}$ x 3 $\frac{3}{4}$	1100	.43"	-	1.5"

4" Packs- Single Header						
DR95-H-2404	12x24x4	11 $\frac{3}{8}$ x 23 $\frac{3}{8}$ x 3 $\frac{3}{4}$	1100	.48"	-	1.5"
DR95-H-0004	20x20x4	19 $\frac{3}{8}$ x 19 $\frac{3}{8}$ x 3 $\frac{3}{4}$	1400	.48"	-	1.5"
DR95-H-0404	20x24x4	19 $\frac{3}{8}$ x 23 $\frac{3}{8}$ x 3 $\frac{3}{4}$	1650	.48"	-	1.5"
DR95-H-4404	24x24x4	23 $\frac{3}{8}$ x 23 $\frac{3}{8}$ x 3 $\frac{3}{4}$	2000	.48"	-	1.5"
DR65-H-2404	12x24x4	11 $\frac{3}{8}$ x 23 $\frac{3}{8}$ x 3 $\frac{3}{4}$	1100	-	.27"	1.5"
DR65-H-0004	20x20x4	19 $\frac{3}{8}$ x 19 $\frac{3}{8}$ x 3 $\frac{3}{4}$	1400	-	.27"	1.5"
DR65-H-0404	20x24x4	19 $\frac{3}{8}$ x 23 $\frac{3}{8}$ x 3 $\frac{3}{4}$	1650	-	.27"	1.5"
DR65-H-4404	24x24x4	23 $\frac{3}{8}$ x 23 $\frac{3}{8}$ x 3 $\frac{3}{4}$	2000	-	.27"	1.5"

IMPORTANT NOTES:

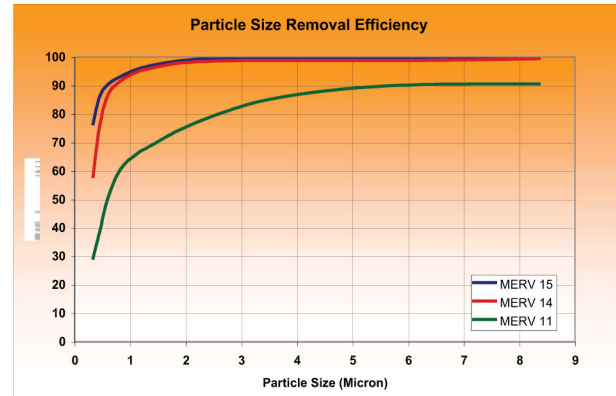
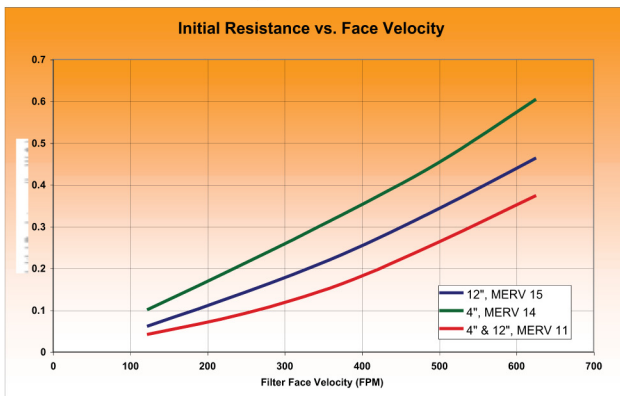
- All performance data is based on the ASHRAE 52.2 Test Standard
- Width and height dimensions are interchangeable. DOMINATOR filters can be installed with the pleats vertical or horizontal
- Continuous Operating Temperature: 140°F (60°C).

Underwriters Laboratories Inc. Classification:
DOMINATOR filters are classified Class 1 per U.L. Standard 900.

Energy Savings Calculator available online at www.purolatorair.com

LEED (*Leadership in Energy and Environment Design*) addresses all building types and emphasizes state-of-the-art strategies in five areas: sustainable site development, water savings, energy efficiency, materials and resources selection, and indoor environmental quality. For more information please visit: www.usgbc.org

* Reverse size pleat on 25" height product.



NORSPEC
FILTRATION

510 Williams Drive
Sarnia, ON N7T 7H5
519-332-2433 phone 800-265-0247 toll free
519-332-4707 fax
www.norspec.com info@norspec.com