

POLYESTER MEDIA



PRODUCT CONSISTENCY

The airlaid principle of the FM (dry) and FP (tackified) series polyester media is to randomly disperse fibers in all directions throughout the web. This forms a uniform, high strength media. Contaminants are trapped within the total media.

True depth loading.

FM SERIES DRY MEDIA

FM Polyester series combines quality, consistency and economy.

MERV 6 in a ½", 1" and 2" thickness.

FP SERIES BLUE TACK MEDIA

The FP series has a uniform coating of tackifier in the flue air leaving side of the media. This locks trapped dirt in the media.

MERV 6 in a ½" thickness.

MERV 7 in a 1" and 2" thickness.

WHY POLYESTER?

- **CONSISTENCY**
- **DRY OR TACKIFIED MEDIA**
- **ONE-HALF, ONE & TWO INCH**
- **U.L. CLASS 2**
- **100% SYNTHETIC**
- **ROLLS, PRE-CUT PADS**

APPLICATIONS

Steel Mills
Office Buildings
Factories
Schools
Construction
Hotels

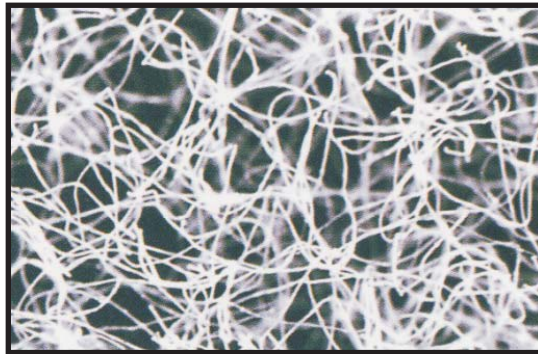
TECHNICAL DATA

MERV 6 & 7 - ASHRAE 52.2-1999

Operating Temperature up to 200° F

Low initial resistance at 295 fpm

FM Series - Dry media, FP Series - Tackified media



Random dispersion of fibers
for true depth loading.

MEDIA	TYPE	COLOUR	THICKNESS	ROLL LENGTH	WEIGHT oz./yd ²	DENSITY lbs/ft ³	RESISTANCE 295 fpm	MERV VALUE
FM 25	DRY	ALL WHITE	1/4"	270'	3.5	0.61	0.06"	N/A
FM 50	DRY	ALL WHITE	1/2"	135'	4.2	0.44	0.09"	6
FM 100	DRY	ALL WHITE	1"	90'	5.9	0.45	0.15"	6
FM200	DRY	YELLOW/WHITE	2"	60'	7.9	0.33	0.13"	6
FP 50	TACK	BLUE/WHITE	1/2"	135'	4.8	0.5	0.11"	6
FP100	TACK	BLUE/WHITE	1"	90'	6.4	0.48	0.16"	7
FP200	TACK	BLUE/WHITE	2"	60'	10	0.42	0.13"	7

CALL Norspec today for pricing on pads and rolls!